



New Product Catalog

www.atatools.com



| | |
|------------------------------|----|
| Introduction | 2 |
| 10 Good Reasons | 3 |
| DIE GRINDER | 4 |
| Turbine Pencil Grinder | 5 |
| Pencil Grinder | 6 |
| High Speed Die Grinder | 7 |
| Low Vibration Die Grinder | 12 |
| Extended Spindle Die Grinder | 13 |
| Extended Body Die Grinder | 15 |
| Horizontal Die Grinder | 16 |
| GRINDER | 17 |
| Medium angle Grinder | 18 |
| Large Angle Grinder | 20 |
| SANDER | 21 |
| Small Angle Sander | 22 |
| Medium Angle Sander | 24 |
| Low Speed Sander | 26 |
| Low Speed Polisher | 28 |
| BELT SANDER | 31 |
| Belt Sander | 32 |
| ACCESSORIES | 34 |
| MAINTENANCE | 40 |
| NOTES | 41 |

WHY SELECT ata tools

With over 50 years experience, ATA is a global leader in the provision of high end industrial air tools. Our comprehensive portfolio offers a solution for every grinding and finishing application, optimizing processes in terms of economic efficiency, reliability and safety. Our customers come from a wide variety of industries, including automotive, aerospace, foundries, metal fabrication, oil & gas, marine, medical, railway and power & energy.

DEDICATED TO QUALITY ata tools

Quality and continuous improvement is a priority at ATA. We strive for exemplary quality in our products and services. In the procurement of goods and services, we look for partnerships with suppliers that apply the same principles of quality assurance. Our management system is based on ISO 9001.

INNOVATION FROM DAY ONE ata tools

Founded in 1963, ATA was a true pioneer in industrial air tools. Since then we have continued to convince our customers with products and solutions. Our industrial expertise and detailed application know-how leads, time and again to pioneering developments.



Wear Protective Goggles Wear Protective Mask Wear Ear Protection Replacement Motor Oil Oil Free Low Noise Low Vibration

International Offices

ATA Group,
IDA Business & Technology Park,
Killygarry, Cavan, Co. Cavan,
Ireland.

T: +353 (0) 49 432 6178
F: + 353 (0) 49 432 6298
E: sales@atagroup.ie
W: www.atagroup.ie

UK Office

ATA Grinding, 99 Commercial Square,
Freemens Common, Leicester,
Leicestershire, LE2 7SR,
United Kingdom

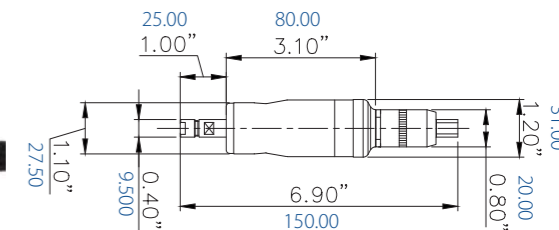
T: +44 (0) 844 967 0702
F: + 44 (0) 844 826 1140
E: sales@atagroupuk.com
W: www.atagroupuk.com



DIE GRINDER



DIE GRINDER Turbine Pencil Grinder - ST100



| | |
|---------------------------------|----------------|
| Model | ST100-IMP |
| Speed (rpm) | 100,000 |
| Power (hp) | 0.06 |
| Power (Watt) | 40 |
| Weight (Kg) | 0.24 |
| Weight (lb) | 0.53 |
| Air consumption (m3/min) | 0.17 |
| Air consumption (cfm) | 6.00 |
| Noise level (db.(A)) | 62 |
| Standard Collet Size Metric | 3 |
| Collet Options - Metric | 2.34mm |
| Standard Collet Size - Imperial | 1/8" |
| Collet Options - Imperial | 3/32" |
| Exhaust type | Front |
| Lever type | Roll |
| Recommended Consumables | |
| Tungsten Carbide Burs | 3mm - 1/8" |
| Abrasives | Mounted points |

FEATURES & BENEFITS

- Oil free-No contamination
- High speed-Fine finish
- Small diameter facilitates precise control
- Minimal tools required for stripping
- Ergo sleeve fitted for operator comfort



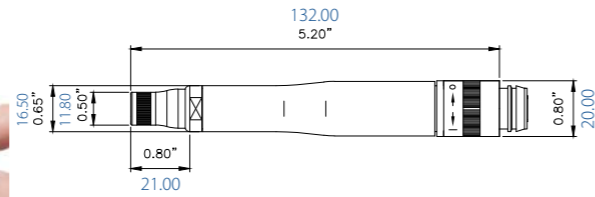
| Accessories | Part Number |
|-------------|-------------|
| Spanner | 25510100 |
| Hose | 17701020 |



Ordering Information

For more information and / or to place an order, please contact ATA Customer Service Internationally +353 (0) 49 432 6178 or by email sales@atagroup.ie or the UK +44 (0) 844 967 0702, email sales@atagroupuk.com

DIE GRINDER Pencil Grinder - SP Line



| Model | SP75R-IMP | SP60R-IMP | SP45R-IMP |
|--------------------------|-----------|-----------|-----------|
| Speed (rpm) | 75,000 | 60,000 | 45,000 |
| Power (hp) | 0.15 | 0.15 | 0.20 |
| Power (Watt) | 110 | 110 | 110 |
| Weight (Kg) | 0.15 | 0.15 | 0.15 |
| Weight (lb) | 0.33 | 0.33 | 0.33 |
| Air consumption (m3/min) | 0.20 | 0.20 | 0.20 |
| Air consumption (cfm) | 7.06 | 7.06 | 7.06 |
| Noise level (db.(A)) | 66 | 63 | 60 |
| Standard collet (mm) | 3 | 3 | 3 |
| Collet options (mm) | 2.34mm | 2.34mm | 2.34mm |
| Standard collet (") | 1/8" | 1/8" | 1/8" |
| Collet options (") | 3/32" | 3/32" | 3/32" |
| Exhaust type | Rear | Rear | Rear |
| Lever type | Roll | Roll | Roll |

| Recommended Consumables | |
|-------------------------|----------------|
| Tungsten Carbide Burs | 3mm - 1/8" |
| Abrasives | Mounted points |

FEATURES & BENEFITS

- Slim body design-for intricate work
- High speed-fine finish
- Small diameter facilitates precise control
- Removable collet guard
- Collet guard for improved control & spindle protection



| Accessories | Part Number |
|-------------|-------------|
| Spanner | 25510100 |
| Hose | 17701020 |
| Over hose | 17710620 |
| Hose Set | 17701220 |

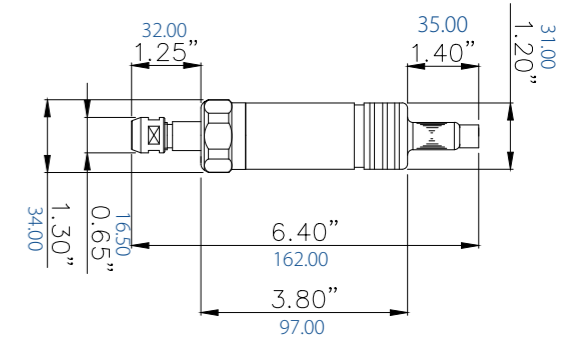


Ordering Information

For more information and / or to place an order, please contact ATA Customer Service Internationally +353 (0) 49 432 6178 or by email sales@atagroup.ie or the UK +44 (0) 844 967 0702, email sales@atagroupuk.com



DIE GRINDER High Speed Grinder S50-IMP



| Model | S50-IMP |
|---------------------------------|-----------|
| Speed (rpm) | 50,000 |
| Power (hp) | 0.25 |
| Power (Watt) | 190 |
| Weight (Kg) | 0.36 |
| Weight (lb) | 0.79 |
| Air consumption (m3/min) | 0.45 |
| Air consumption (cfm) | 15.89 |
| Noise level (db.(A)) | 70 |
| Standard Collet Size Metric | 6 |
| Collet Options - Metric | 3 |
| Standard Collet Size - Imperial | 1/4" |
| Collet Options - Imperial | 1/8" |
| Exhaust type | Front |
| Lever type | Push pull |

| Recommended Consumables | |
|-------------------------|--------------------------|
| Tungsten Carbide Burs | 3 to 8mm - 1/8" to 5/16" |
| Abrasives | Mounted points |

FEATURES & BENEFITS

- Compact design for heavy deburring
- Push pull throttle for continuous running
- Powerful motor for grinding and polishing



| Accessories | Part Number |
|-------------|-------------|
| Spanner | 25546200 |
| Spanner | 25561110 |
| Hose | 17731420 |
| Over hose | 17794520 |
| Hose Set | 17711020 |

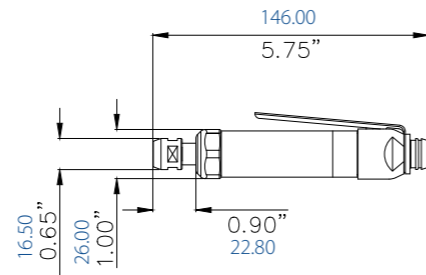


Ordering Information

For more information and / or to place an order, please contact ATA Customer Service Internationally +353 (0) 49 432 6178 or by email sales@atagroup.ie or the UK +44 (0) 844 967 0702, email sales@atagroupuk.com



DIE GRINDER High Speed Die Grinder - SD45LR



| | |
|---------------------------------|--------------|
| Model | SD45LR-IMP |
| Speed (rpm) | 45,000 |
| Power (hp) | 0.20 |
| Power (Watt) | 150 |
| Weight (Kg) | 0.24 |
| Weight (lb) | 0.53 |
| Air consumption (m3/min) | 0.23 |
| Air consumption (cfm) | 8.12 |
| Noise level (db.(A)) | 64 |
| Standard Collet Size Metric | 6 |
| Collet Options - Metric | 3 |
| Standard Collet Size - Imperial | 1/4" |
| Collet Options - Imperial | 1/8" |
| Exhaust type | Rear |
| Lever type | Simple lever |

FEATURES & BENEFITS

- Powerful for digging out defects
- Simple lever operation best for where use is not continuous
- Ergo sleeve fitted for operator comfort



| | |
|-------------------------|--------------------------|
| Recommended Consumables | |
| Tungsten Carbide Burs | 3 to 8mm - 1/8" to 5/16" |
| Abrasives | Mounted points |



| Accessories | Part Number |
|-------------|-------------|
| Spanner | 25546200 |
| Spanner | 25561110 |
| Hose | 17701020 |
| Over hose | 17710620 |
| Hose Set | 17701220 |

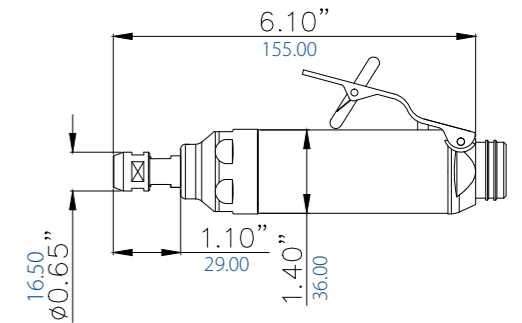


Ordering Information

For more information and / or to place an order, please contact ATA Customer Service Internationally +353 (0) 49 432 6178 or by email sales@atagroup.ie or the UK +44 (0) 844 967 0702, email sales@atagroupuk.com



DIE GRINDER High Speed Die Grinder - SD Line



| Model | SD37L-IMP | SD30L-IMP | SD26L-IMP | SD37LR-IMP | SD30LR-IMP | SD26LR-IMP |
|--------------------------|--------------|--------------|--------------|--------------|--------------|--------------|
| Speed (rpm) | 37,000 | 30,000 | 25,000 | 37,000 | 30,000 | 25,000 |
| Power (hp) | 0.40 | 0.40 | 0.40 | 0.40 | 0.40 | 0.40 |
| Power (Watt) | 300 | 300 | 300 | 300 | 300 | 300 |
| Weight (Kg) | 0.46 | 0.46 | 0.46 | 0.46 | 0.46 | 0.46 |
| Weight (lb) | 1.01 | 1.01 | 1.01 | 1.01 | 1.01 | 1.01 |
| Air consumption (m3/min) | 0.57 | 0.57 | 0.57 | 0.57 | 0.57 | 0.57 |
| Air consumption (cfm) | 20.13 | 20.13 | 20.13 | 20.13 | 20.13 | 20.13 |
| Noise level (db.(A)) | 75 | 73 | 72 | 74 | 73 | 72 |
| Standard collet (mm) | 6 | 6 | 6 | 6 | 6 | 6 |
| Collet options (mm) | 3 | 3 | 3 | 3 | 3 | 3 |
| Standard collet (") | 1/4" | 1/4" | 1/4" | 1/4" | 1/4" | 1/4" |
| Collet options (") | 1/8" | 1/8" | 1/8" | 1/8" | 1/8" | 1/8" |
| Exhaust type | Front | Front | Front | Rear | Rear | Rear |
| Lever type | Safety lever | Safety lever | Safety lever | Safety lever | Safety lever | Safety lever |

| | |
|-------------------------|----------------------------|
| Recommended Consumables | |
| Tungsten Carbide Burs | 3mm to 12mm - 1/8" to 1/2" |
| Abrasives | Mounted points |



| Accessories | Part Number |
|-------------|-------------|
| Spanner | 25546200 |
| Spanner | 25561110 |
| Hose | 17731420 |
| Over hose | 17794520 |
| Hose Set | 17711020 |

FEATURES & BENEFITS

- Excellent power/weight ratio
- Used for general de-burring, grinding & polishing
- Compact design suitable for light to medium de-burring applications
- Ergo sleeve fitted for operator comfort



Ordering Information

For more information and / or to place an order, please contact ATA Customer Service Internationally +353 (0) 49 432 6178 or by email sales@atagroup.ie or the UK +44 (0) 844 967 0702, email sales@atagroupuk.com



DIE GRINDER High Speed Die Grinder - P25/2-IMP

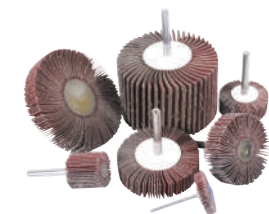


| Model | P25/2-IMP |
|---------------------------------|--------------|
| Speed (rpm) | 25,000 |
| Power (hp) | 0.50 |
| Power (Watt) | 375 |
| Weight (Kg) | 0.60 |
| Weight (lb) | 1.32 |
| Air consumption (m3/min) | 0.60 |
| Air consumption (cfm) | 21.19 |
| Noise level (db.(A)) | 80 |
| Standard Collet Size Metric | 6 |
| Collet Options - Metric | 3, 8 & 10 |
| Standard Collet Size - Imperial | 1/4" |
| Collet Options - Imperial | 1/8", 3/8" |
| Exhaust type | Front |
| Lever type | Safety lever |

| Recommended Consumables | |
|-------------------------|----------------------------------|
| Tungsten Carbide Burs | 10 & 12mm - 3/8" & 1/2" |
| Abrasives | Mounted points/Flap wheels/Bands |

FEATURES & BENEFITS

- Excellent power/weight ratio
- One handed operation suitable for general de burring
- Compact design suitable for light to medium de burring applications



| Accessories | Part Number |
|-------------|-------------|
| Spanner | 25561210 |
| Spanner | 25561110 |
| Hose | 17731420 |
| Over house | 17794520 |
| Hose Set | 17711020 |

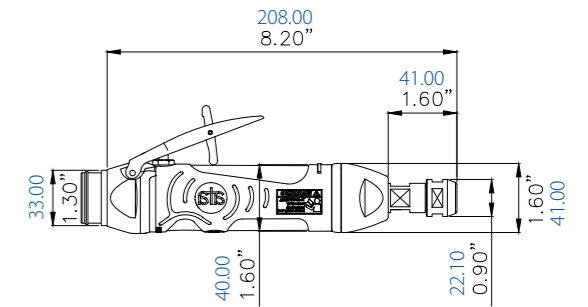


Ordering Information

For more information and / or to place an order, please contact ATA Customer Service Internationally +353 (0) 49 432 6178 or by email sales@atagroup.ie or the UK +44 (0) 844 967 0702, email sales@atagroupuk.com



DIE GRINDER High Power Die Grinder - SM Line



| Model | SM25L-CA-IMP | SM16L-CA-IMP | SM10L-CA-IMP | SM25LR-CA-IMP | SM16LR-CA-IMP | SM10LR-CA-IMP |
|--------------------------|--------------|--------------|--------------|---------------|---------------|---------------|
| Speed (rpm) | 25,000 | 16,000 | 10,000 | 25,000 | 16,000 | 10,000 |
| Power (hp) | 1.10 | 1.10 | 1.10 | 1.10 | 1.10 | 1.10 |
| Power (Watt) | 820 | 820 | 820 | 820 | 820 | 820 |
| Weight (Kg) | 0.75 | 0.75 | 0.75 | 0.73 | 0.73 | 0.73 |
| Weight (lb) | 1.65 | 1.65 | 1.65 | 1.61 | 1.61 | 1.61 |
| Air consumption (m3/min) | 0.62 | 0.62 | 0.62 | 0.62 | 0.62 | 0.62 |
| Air consumption (cfm) | 21.89 | 21.89 | 21.89 | 21.89 | 21.89 | 21.89 |
| Noise level (db.(A)) | 74 | 77 | 78 | 74 | 75 | 77 |
| Standard collet (mm) | 6 | 6 | 6 | 6 | 6 | 6 |
| Collet options (mm) | 3,8,10 | 3,8,10 | 3,8,10 | 3,8,10 | 3,8,10 | 3,8,10 |
| Standard collet (") | 1/4" | 1/4" | 1/4" | 1/4" | 1/4" | 1/4" |
| Collet options (") | 1/8", 3/8" | 1/8", 3/8" | 1/8", 3/8" | 1/8", 3/8" | 1/8", 3/8" | 1/8", 3/8" |
| Exhaust type | Front | Front | Front | Rear | Rear | Rear |
| Lever type | Safety lever | Safety lever | Safety lever | Safety lever | Safety lever | Safety lever |

| Recommended Consumables | |
|-------------------------|-----------------------------------|
| Tungsten Carbide Burs | 12 & 15mm - 1/2" & 9/16" |
| Abrasives | Mounted points/Flap wheels/ Bands |



| Accessories | Part Number |
|-------------|-------------|
| Spanner | 25561210 |
| Spanner | 25500510 |
| Hose | 17712120 |
| Over hose | 17795020 |
| Hose Set | 17711020 |

FEATURES & BENEFITS

- Motor - more power less consumption
- Throttle valve for smoother start up action
- New moulded sleeve for improved ergonomics - operator comfort & insulation
- Ergonomically designed lever construction

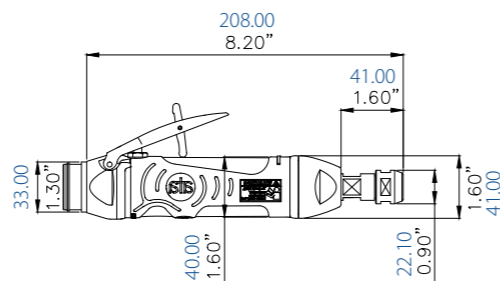


Ordering Information

For more information and / or to place an order, please contact ATA Customer Service Internationally +353 (0) 49 432 6178 or by email sales@atagroup.ie or the UK +44 (0) 844 967 0702, email sales@atagroupuk.com



DIE GRINDER Low Vibration Die Grinder - SMD Line



| Model | SMD25LR-CA-IMP | SMD18LR-CA-IMP |
|--------------------------|----------------|----------------|
| Speed (rpm) | 25,000 | 18,000 |
| Power (hp) | 1.10 | 1.10 |
| Power (Watt) | 820 | 820 |
| Weight (Kg) | 0.80 | 0.80 |
| Weight (lb) | 1.76 | 1.76 |
| Air consumption (m3/min) | 0.62 | 0.62 |
| Air consumption (cfm) | 21.89 | 21.89 |
| Noise level (db(A)) | 77 | 75 |
| Standard collet (mm) | 6 | 6 |
| Collet options (mm) | 3,8,10 | 3,8,10 |
| Standard collet (") | 1/4" | 1/4" |
| Collet options (") | 1/8", 3/8" | 1/8", 3/8" |
| Exhaust type | Rear | Rear |
| Lever type | Safety lever | Safety lever |

FEATURES & BENEFITS

- Unique anti-vibration dampening system
- Throttle valve for smoother start up action
- Moulded sleeve for improved ergonomics - operator comfort & insulation
- Ergonomically designed lever construction
- Governor design offering a range of speeds



| Recommended Consumables | |
|-------------------------|----------------------------|
| Tungsten Carbide Burs | 12 to 15mm / 1/2" to 9/16" |



| Accessories | Part Number |
|-------------|-------------|
| Spanner | 25561210 |
| Spanner | 25500510 |
| Hose | 17712120 |
| Over hose | 17795020 |

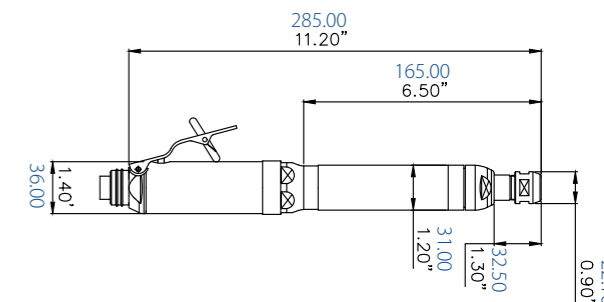


Ordering Information

For more information and / or to place an order, please contact ATA Customer Service Internationally +353 (0) 49 432 6178 or by email sales@atagroup.ie or the UK +44 (0) 844 967 0702, email sales@atagroupuk.com



DIE GRINDER Extended Spindle Die Grinder - SDX Line



| Model | SDX37LR-IMP | SDX30LR-IMP | SDX26LR-IMP |
|--------------------------|--------------|--------------|--------------|
| Speed (rpm) | 37,000 | 30,000 | 25,000 |
| Power (hp) | 0.40 | 0.40 | 0.40 |
| Power (Watt) | 300 | 300 | 300 |
| Weight (Kg) | 0.80 | 0.80 | 0.80 |
| Weight (lb) | 1.76 | 1.76 | 1.76 |
| Air consumption (m3/min) | 0.57 | 0.57 | 0.57 |
| Air consumption (cfm) | 20.13 | 20.13 | 20.13 |
| Noise level (db.(A)) | 74 | 73 | 72 |
| Standard collet (mm) | 6 | 6 | 6 |
| Collet options (mm) | 3,8,10 | 3,8,10 | 3,8,10 |
| Standard collet (") | 1/4" | 1/4" | 1/4" |
| Collet options (") | 1/8", 3/8" | 1/8", 3/8" | 1/8", 3/8" |
| Exhaust type | Rear | Rear | Rear |
| Lever type | Safety lever | Safety lever | Safety lever |

FEATURES & BENEFITS

- Double handed-for comfort /control & precision
- Excellent power/weight ratio
- Two handed grip gives good control over the process
- Suitable for a range of light grinding applications
- Ergo sleeves fitted for operator comfort



| Recommended Consumables | |
|-------------------------|----------------------------------|
| Tungsten Carbide Burs | 3mm to 12mm - 1/8" to 1/2" |
| Abrasives | Mounted points/Flap wheels/Bands |



| Accessories | Part Number |
|-------------|-------------|
| Spanner | 25561210 |
| Spanner | 25561110 |
| Hose | 17712120 |
| Over hose | 17794520 |
| Hose Set | 14411420 |

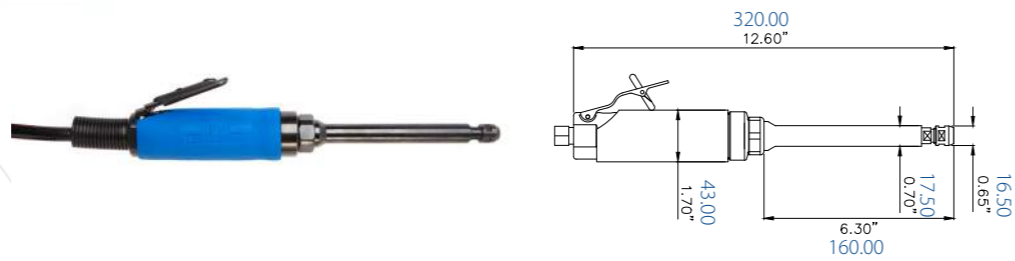


Ordering Information

For more information and / or to place an order, please contact ATA Customer Service Internationally +353 (0) 49 432 6178 or by email sales@atagroup.ie or the UK +44 (0) 844 967 0702, email sales@atagroupuk.com



DIE GRINDER Extended Spindle Die Grinder - SX Line



| Model | SX22LR-IMP | SX16LR-IMP | SX10LR-IMP |
|--------------------------|--------------|--------------|--------------|
| Speed (rpm) | 22,000 | 16,000 | 10,000 |
| Power (hp) | 0.85 | 0.85 | 0.85 |
| Power (Watt) | 630 | 630 | 630 |
| Weight (Kg) | 1.17 | 1.17 | 1.17 |
| Weight (lb) | 2.57 | 2.57 | 2.57 |
| Air consumption (m3/min) | 0.85 | 0.85 | 0.85 |
| Air consumption (cfm) | 30.01 | 30.01 | 30.01 |
| Noise level (db.(A)) | 70 | 65 | 64 |
| Standard collet (mm) | 6 | 6 | 6 |
| Collet options (mm) | 3,8,10 | 3,8,10 | 3,8,10 |
| Standard collet (") | 1/4" | 1/4" | 1/4" |
| Collet options (") | 1/8", 3/8" | 1/8", 3/8" | 1/8", 3/8" |
| Exhaust type | Rear | Rear | Rear |
| Lever type | Safety lever | Safety lever | Safety lever |

FEATURES & BENEFITS

- Extended spindle for access in restricted areas
- Small diameter spindle for restricted access applications
- Spindle protected from work piece by spindle housing
- Ergo sleeve fitted for operator comfort



| Recommended Consumables | | |
|-------------------------|----------------|-----------------|
| Tungsten Carbide Burs | 15 to 20mm | 9/16" to 13/16" |
| Abrasives | Mounted points | |



| Accessories | Part Number |
|-------------|-------------|
| Spanner | 25561110 |
| Spanner | 25546210 |
| Hose | 17731420 |
| Over hose | 17794520 |
| Hose Set | 17711020 |



Ordering Information

For more information and / or to place an order, please contact ATA Customer Service Internationally +353 (0) 49 432 6178 or by email sales@atagroup.ie or the UK +44 (0) 844 967 0702, email sales@atagroupuk.com



DIE GRINDER Extended Body Die Grinder - SMX Line



| Model | SMX25L-IMP | SMX16L-IMP | SMX10L-IMP | SMX25LR-IMP | SMX16LR-IMP | SMX10LR-IMP |
|--------------------------|--------------|--------------|--------------|--------------|--------------|--------------|
| Speed (rpm) | 25,000 | 16,000 | 10,000 | 25,000 | 16,000 | 10,000 |
| Power (hp) | 1.10 | 1.10 | 1.10 | 1.10 | 1.10 | 1.10 |
| Power (Watt) | 820 | 820 | 820 | 820 | 820 | 820 |
| Weight (Kg) | 1.30 | 1.30 | 1.30 | 1.30 | 1.30 | 1.30 |
| Weight (lb) | 2.86 | 2.86 | 2.86 | 2.86 | 2.86 | 2.86 |
| Air consumption (m3/min) | 0.62 | 0.62 | 0.62 | 0.62 | 0.62 | 0.62 |
| Air consumption (cfm) | 21.89 | 21.89 | 21.89 | 21.89 | 21.89 | 21.89 |
| Noise level (db.(A)) | 78 | 77 | 74 | 77 | 75 | 74 |
| Standard collet (mm) | 6 | 6 | 6 | 6 | 6 | 6 |
| Collet options (mm) | 3,8,10 | 3,8,10 | 3,8,10 | 3,8,10 | 3,8,10 | 3,8,10 |
| Standard collet (") | 1/4" | 1/4" | 1/4" | 1/4" | 1/4" | 1/4" |
| Collet options (") | 1/8", 3/8" | 1/8", 3/8" | 1/8", 3/8" | 1/8", 3/8" | 1/8", 3/8" | 1/8", 3/8" |
| Exhaust type | Front | Front | Front | Rear | Rear | Rear |
| Lever type | Safety lever | Safety lever | Safety lever | Safety lever | Safety lever | Safety lever |

| Recommended Consumables | | |
|-------------------------|------------------------------------|--------------------|
| Tungsten Carbide Burs | 15, 20 & 25mm | 9/16", 13/16" & 1" |
| Abrasives | Mounted points, flap wheels, bands | |



| Accessories | Part Number |
|-------------|-------------|
| Spanner | 25561210 |
| Spanner | 25561110 |
| Hose | 17712120 |

FEATURES & BENEFITS

- Spider coupling-Improved transmission strength
- Motor-more power less consumption
- Throttle valve for smoother start up action
- Ergonomically designed lever construction
- Governor design offering a range of speeds

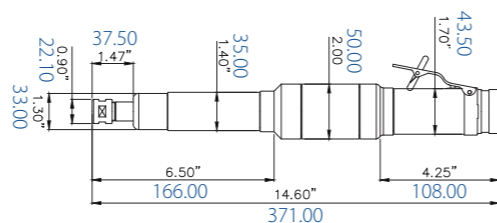


Ordering Information

For more information and / or to place an order, please contact ATA Customer Service Internationally +353 (0) 49 432 6178 or by email sales@atagroup.ie or the UK +44 (0) 844 967 0702, email sales@atagroupuk.com



DIE GRINDER Horizontal Die Grinder - SHG18LR-IMP



| | |
|---------------------------------|--------------|
| Model | SHG18LR-IMP |
| Speed (rpm) | 18,000 |
| Power (hp) | 1.50 |
| Power (Watt) | 1100 |
| Weight (Kg) | 2.50 |
| Weight (lb) | 5.50 |
| Air consumption (m3/min) | 1.13 |
| Air consumption (cfm) | 39.90 |
| Noise level (db.(A)) | 70 |
| Standard Collet Size Metric | 6 |
| Collet Options - Metric | 3,8,10 |
| Standard Collet Size - Imperial | 1/4" |
| Collet Options - Imperial | 1/8", 3/8" |
| Exhaust type | Rear |
| Lever type | Safety lever |

| | |
|-------------------------|-----------------------------------|
| Recommended Consumables | |
| Tungsten Carbide Burs | 15 & 20mm - 9/16" & 13/16" |
| Abrasives | Flap wheel/Large abrasives wheels |

FEATURES & BENEFITS

- High power/weight ratio compared with high cycle grinders
- Double handed operation for improved control
- Robust for heavy duty applications
- Suitable for use with 15mm tungsten carbide burs
- Ergo sleeve fitted for operator comfort



| Accessories | Part Number |
|-------------|-------------|
| Spanner | 25561210 |
| Spanner | 25561110 |
| Hose | 17700320 |
| Over hose | 17700520 |
| Hose Set | 17711020 |

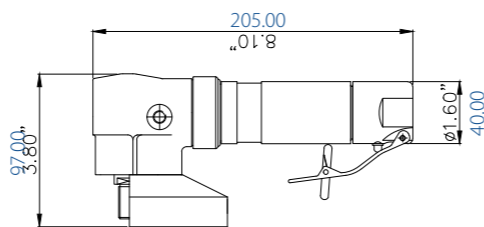


Ordering Information

For more information and / or to place an order, please contact ATA Customer Service Internationally +353 (0) 49 432 6178 or by email sales@atagroup.ie or the UK +44 (0) 844 967 0702, email sales@atagroupuk.com



GRINDER Medium Angle Grinder - RA13 Line



| Model | RA13-100-IMP | RA13-115-IMP |
|--------------------------|--------------|--------------|
| Speed (rpm) | 13,000 | 13,000 |
| Power (hp) | 1.10 | 1.10 |
| Power (Watt) | 820 | 820 |
| Weight (Kg) | 1.60 | 1.60 |
| Weight (lb) | 3.52 | 3.52 |
| Air consumption (m3/min) | 0.92 | 0.92 |
| Air consumption (cfm) | 32.49 | 32.49 |
| Noise level (db.(A)) | 73 | 73 |
| Exhaust type | Front | Front |
| Lever type | Safety lever | Safety lever |

| Recommended Consumables | |
|-------------------------|--|
| Abrasives | Grinding discs, Flap discs and Fiber discs |

FEATURES & BENEFITS

- One or two handed operation possible
- Suitable for medium sanding applications
- Available as a sander or grinder.
- Excellent power / weight ratio
- Ergo sleeve fitted for operator comfort



| Accessories | Part Number |
|------------------------|-------------|
| Pin Key (RA13-100-IMP) | 25566210 |
| Pin Key (RA13-115-IMP) | 25541910 |
| Spanner | 25561110 |
| Hose | 17731420 |
| Over hose | 17794520 |
| Hose Set | 17711020 |

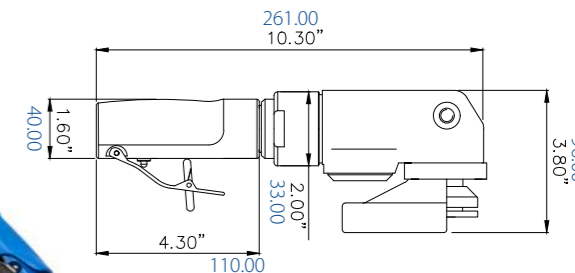


Ordering Information

For more information and / or to place an order, please contact ATA Customer Service Internationally +353 (0) 49 432 6178 or by email sales@atagroup.ie or the UK +44 (0) 844 967 0702, email sales@atagroupuk.com

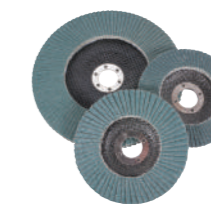


GRINDER Medium Angle Grinder - RA14 Line



| Model | RA14-100-DS1-IMP | RA14-115-DS1-IMP | RA14-125-DS1-IMP | RA14-100-PA4-IMP | RA14-115-PA4-IMP | RA14-125-PA4-IMP |
|--------------------------|------------------|------------------|------------------|------------------|------------------|------------------|
| Speed (rpm) | 15,000 | 13,000 | 12,000 | 15,000 | 13,000 | 12,000 |
| Power (hp) | 1.50 | 1.50 | 1.50 | 1.50 | 1.50 | 1.50 |
| Power (Watt) | 1100 | 1100 | 1100 | 1100 | 1100 | 1100 |
| Weight (Kg) | 1.90 | 1.90 | 1.90 | 1.90 | 1.90 | 1.90 |
| Weight (lb) | 4.18 | 4.18 | 4.18 | 4.18 | 4.18 | 4.18 |
| Air consumption (m3/min) | 1.13 | 1.13 | 1.13 | 1.13 | 1.13 | 1.13 |
| Air consumption (cfm) | 39.90 | 39.90 | 39.90 | 39.90 | 39.90 | 39.90 |
| Noise level (db.(A)) | 79 | 79 | 79 | 78 | 77 | 75 |
| Exhaust type | Diffuser | Diffuser | Diffuser | Piston | Piston | Piston |
| Lever type | Safety lever | Safety lever | Safety lever | Safety lever | Safety lever | Safety lever |

| Recommended Consumables | |
|-------------------------|---|
| Abrasives | Grinding discs, Flap discs and Fiber disc |



| Accessories | Part Number |
|-------------|-------------|
| Pin Key | 25566210 |
| Spanner | 25561210 |
| Allen Key | 10911800 |
| Hose | 17733820 |
| Over hose | 17700520 |

FEATURES & BENEFITS

- High speed - fine finish
- Small diameter facilitates precise control
- Minimal tools required for stripping
- Ergo sleeve fitted for operator comfort

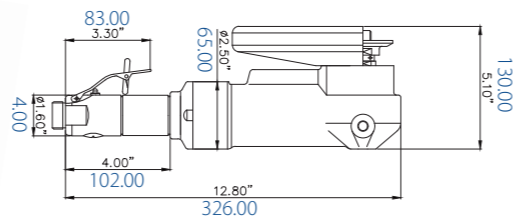


Ordering Information

For more information and / or to place an order, please contact ATA Customer Service Internationally +353 (0) 49 432 6178 or by email sales@atagroup.ie or the UK +44 (0) 844 967 0702, email sales@atagroupuk.com



GRINDER Large Angle Grinder - RAXAVH Line



| Model | RA8AVH-IMP | RA6AVH-IMP |
|--------------------------|-------------------------------|--------------|
| Speed (rpm) | 8,500 | 6,500 |
| Power (hp) | 2.00 | 2.00 |
| Power (Watt) | 1500 | 1500 |
| Weight (Kg) | 3.50 | 3.50 |
| Weight (lb) | 7.70 | 7.70 |
| Air consumption (m3/min) | 1.90 | 1.90 |
| Air consumption (cfm) | 67.09 | 67.09 |
| Noise level (db.(A)) | 79 | 79 |
| Exhaust type | Front | Front |
| Lever type | Safety lever | Safety lever |
| Recommended Consumables | | |
| Abrasives | Grinding discs and Flap discs | |

FEATURES & BENEFITS

- Powerful motor for heavy grinding
- Powerful and fast to ensure fast stock removal
- Robust and reliable design for arduous applications
- Anti-vibration side handle
- Ergo sleeve fitted for operator comfort



| Accessories | Part Number |
|-------------|-------------|
| Spanner | 25561210 |
| Pin Key | 25541910 |
| Allen Key | 10911800 |
| Hose | 17731220 |

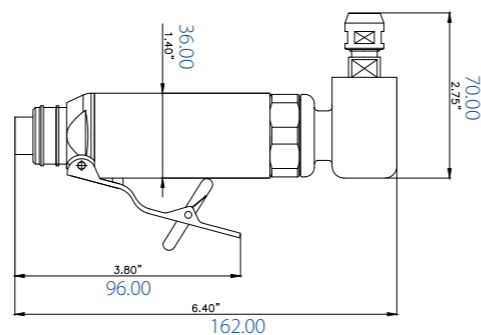


Ordering Information

For more information and / or to place an order, please contact ATA Customer Service Internationally +353 (0) 49 432 6178 or by email sales@atagroup.ie or the UK +44 (0) 844 967 0702, email sales@atagroupuk.com



SANDERS Small Angle Sander - RA20-10 Line



| Model | RA20LR-IMP | RA10LR-IMP | RA20LRX -75-IMP | RA20LR -125-IMP | RA10LRX -75-IMP | RA10LRX -125-IMP |
|--------------------------|--------------|--------------|--------------------|--------------------|--------------------|---------------------|
| Speed (rpm) | 20,000 | 12,000 | 20,000 | 20,000 | 12,000 | 12,000 |
| Power (hp) | 0.40 | 0.40 | 0.40 | 0.40 | 0.40 | 0.40 |
| Power (Watt) | 300 | 300 | 300 | 300 | 300 | 300 |
| Weight (Kg) | 0.52 | 0.52 | 0.65 | 0.70 | 0.65 | 0.70 |
| Weight (lb) | 1.14 | 1.14 | 1.43 | 1.54 | 1.14 | 1.14 |
| Air consumption (m3/min) | 0.57 | 0.57 | 0.57 | 0.57 | 0.57 | 0.57 |
| Air consumption (cfm) | 20.13 | 20.13 | 20.13 | 20.13 | 20.13 | 20.13 |
| Noise level (db.(A)) | 74 | 71 | 74 | 74 | 71 | 71 |
| Standard collet (mm) | 6 | 6 | 6 | 6 | 6 | 6 |
| Collet options (mm) | 3 | 3 | 3 | 3 | 3 | 3 |
| Standard collet (") | 1/4" | 1/4" | 1/4" | 1/4" | 1/4" | 1/4" |
| Collet options (") | 1/8" | 1/8" | 1/8" | 1/8" | 1/8" | 1/8" |
| Exhaust type | Rear | Rear | Rear | Rear | Rear | Rear |
| Lever type | Safety lever | Safety lever | Safety lever | Safety lever | Safety lever | Safety lever |

FEATURES & BENEFITS FOR LR MODELS

- Ergonomic design for operator comfort
- Excellent power/weight ratio
- Collet & direct attachment facilitates use with burs & abrasive discs
- Suitable for use with 50mm sanding discs

FEATURES & BENEFITS FOR LRX-75 MODELS

- Ergonomic design for operator comfort
- Excellent power/weight ratio
- Needle roller bearing in spindle housing for improved spindle support
- 75mm extended spindle for sanding in difficult to access areas
- Removable thread cover when not using extended spindles

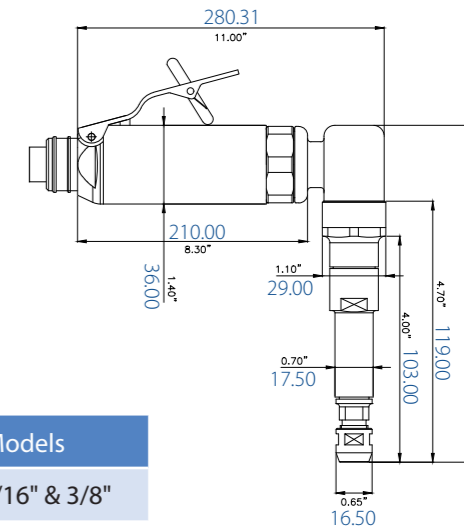


Ordering Information

For more information and / or to place an order, please contact ATA Customer Service Internationally +353 (0) 49 432 6178 or by email sales@atagroup.ie or the UK +44 (0) 844 967 0702, email sales@atagroupuk.com



SANDERS Small Angle Sander - RA20-10 Line *Contd.*



| Recommended Consumables | RA20 Models | RA10 Models |
|-------------------------|---|---|
| Tungsten Carbide Burs | 6 & 8mm - 1/4" & 5/16" | 8 & 10mm - 5/16" & 3/8" |
| Abrasives | Sanding discs/QCD, Fan grinders, Mounted points | Sanding discs/QCD, Fan grinders, Mounted points |

| Accessories | Part Number |
|-------------|-------------|
| Spanner | 25561110 |
| Spanner | 25546210 |
| Hose | 17712120 |
| Over hose | 17794520 |
| Hose Set | 17711420 |



FEATURES & BENEFITS FOR LRX-125 MODELS

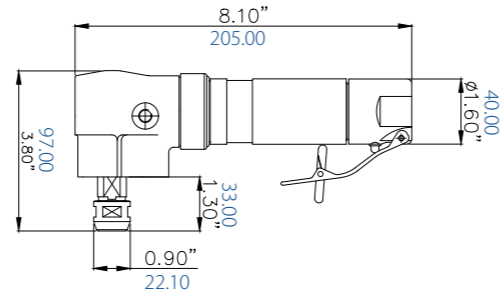
- Ergonomically designed/compact
- Excellent power/weight Ratio
- Needle roller bearing in spindle housing for improved spindle support
- 125mm extended spindle for sanding in difficult to access areas
- Removable thread cover when not using extended spindles



Ordering Information

For more information and / or to place an order, please contact ATA Customer Service Internationally +353 (0) 49 432 6178 or by email sales@atagroup.ie or the UK +44 (0) 844 967 0702, email sales@atagroupuk.com

SANDER Medium Angle Sander - RA13C-IMP



FEATURES & BENEFITS

- One or two handed operation possible
- Suitable for sanding applications
- Collet design to allow use with burs or abrasives
- Range of collet options available
- Ergo sleeve fitted for operator comfort



| Model | RA13C-IMP |
|---------------------------------|--------------|
| Speed (rpm) | 13,000 |
| Power (hp) | 1.10 |
| Power (Watt) | 820 |
| Weight (Kg) | 1.50 |
| Weight (lb) | 3.30 |
| Air consumption (m3/min) | 0.92 |
| Air consumption (cfm) | 32.49 |
| Noise level (db.(A)) | 72 |
| Standard Collet Size Metric | 6 |
| Collet Options - Metric | 3,8,10 |
| Standard Collet Size - Imperial | 1/4" |
| Collet Options - Imperial | 1/8", 3/8" |
| Exhaust type | Front |
| Lever type | Safety lever |

| Recommended Consumables | |
|-------------------------|--------------------------|
| Tungsten Carbide Burs | 12 & 15mm - 1/2" & 9/16" |

Abrasives Fan grinders, Sanding discs, Mounted points



| Accessories | Part Number |
|-------------|-------------|
| Spanner | 25561210 |
| Spanner | 25561110 |
| Hose | 17731420 |
| Over hose | 17794520 |
| Hose Set | 17711020 |

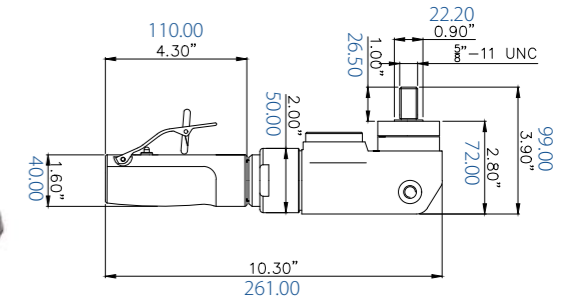


Ordering Information

For more information and / or to place an order, please contact ATA Customer Service Internationally +353 (0) 49 432 6178 or by email sales@atagroup.ie or the UK +44 (0) 844 967 0702, email sales@atagroupuk.com



SANDER Medium Angle Sander - RA14S-125PA5-IMP



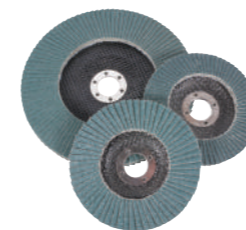
FEATURES & BENEFITS

- Modified gear set for increased torque during grinding
- Durable/robust design
- Auto-balancer & antivibration side handle to reduce anti-vibration
- Piston type exhaust for reduced noise



| Model | RA14S-125PA5-IMP |
|--------------------------|------------------|
| Speed (rpm) | 9,000 |
| Power (hp) | 1.50 |
| Power (Watt) | 1100 |
| Weight (Kg) | 1.90 |
| Weight (lb) | 4.19 |
| Air consumption (m3/min) | 1.13 |
| Air consumption (cfm) | 39.90 |
| Noise level (db.(A)) | 75 |
| Exhaust type | Piston |
| Lever type | Safety lever |

| Recommended Consumables | |
|-------------------------|---------------|
| Abrasives | Sanding discs |



| Accessories | Part Number |
|-------------|-------------|
| Spanner | 25541910 |
| Hose | 17733820 |
| Over hose | 17700520 |
| Hose set | 17700520 |

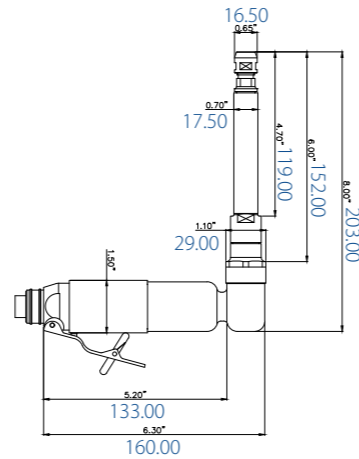
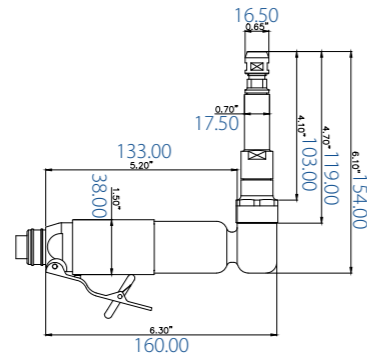


Ordering Information

For more information and / or to place an order, please contact ATA Customer Service Internationally +353 (0) 49 432 6178 or by email sales@atagroup.ie or the UK +44 (0) 844 967 0702, email sales@atagroupuk.com



SANDER Low Speed Sander - RAB4LR Line



FEATURES & BENEFITS FOR LR MODELS

- Low speed/high torque thanks to planetary gears, ideal for titanium applications
- Direct spindle attachment can be fitted for reduced vibration
- Collet options available
- Ergo sleeve fitted for operator comfort

FEATURES & BENEFITS FOR LRX-75 MODELS

- Same as LR model
- 75mm extended spindle for sanding in difficult to access areas

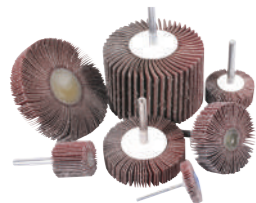
FEATURES & BENEFITS FOR LRX-125 MODELS

- Same as LR model
- 125mm extended spindle for sanding in difficult to access areas

| Model | RAB4LR-IMP | RAB4LR-75-IMP | RAB4LR-125-IMP |
|--------------------------|------------|---------------|----------------|
| Speed (rpm) | 3500 | 3500 | 3500 |
| Power (hp) | 0.40 | 0.40 | 0.40 |
| Power (Watt) | 300 | 300 | 300 |
| Weight (Kg) | 0.69 | 0.70 | 0.71 |
| Weight (lb) | 1.52 | 1.52 | 1.52 |
| Air consumption (m3/min) | 0.57 | 0.57 | 0.57 |
| Air consumption (cfm) | 20.13 | 20.13 | 20.13 |
| Noise level (db.(A)) | 67 | 67 | 67 |
| Standard collet (mm) | 6 | 6 | 6 |
| Collet options (mm) | 3 | 3 | 3 |
| Standard collet (") | 1/4" | 1/4" | 1/4" |
| Collet options (") | 1/8" | 1/8" | 1/8" |
| Exhaust type | Rear | Rear | Rear |
| Lever type | Lever | Lever | Lever |

| Recommended Consumables | |
|-------------------------|--|
| Carbide Burs | |

Abrasives



Fan grinders, QCD and Mounted points

| Accessories | Part Number |
|-------------|-------------|
| Spanner | 25561110 |
| Spanner | 25546210 |
| Hose | 17712120 |
| Over hose | 17794520 |
| Hose Set | 17711420 |

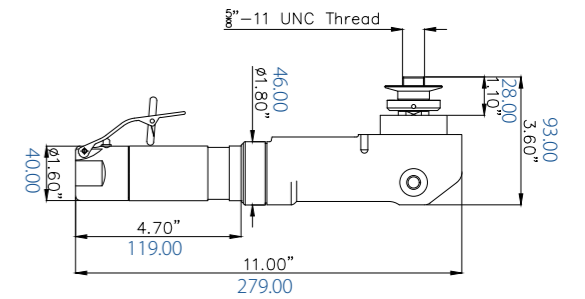


Ordering Information

For more information and / or to place an order, please contact ATA Customer Service Internationally +353 (0) 49 432 6178 or by email sales@atagroup.ie or the UK +44 (0) 844 967 0702, email sales@atagroupuk.com



SANDER Low Speed Sander - RA5/2 LINE



| Model | RA5-IMP | RA2-IMP |
|--------------------------|--------------|--------------|
| Speed (rpm) | 5500 | 2700 |
| Power (hp) | 1.10 | 1.10 |
| Power (Watt) | 820 | 820 |
| Weight (Kg) | 2.75 | 2.75 |
| Weight (lb) | 6.05 | 6.05 |
| Air consumption (m3/min) | 0.92 | 0.92 |
| Air consumption (cfm) | 32.49 | 32.49 |
| Noise level (db.(A)) | 69 | 68 |
| Exhaust type | Front | Front |
| Lever type | Safety lever | Safety lever |

| Recommended Consumables | |
|-------------------------|--|
| Abrasives | Sanding discs and surface conditioning discs |



| Accessories | Part Number |
|-------------|-------------|
| Pin Key | 25541910 |
| Spanner | 25561210 |
| Hose | 17731420 |
| Over hose | 17794520 |
| Hose Set | 17711020 |

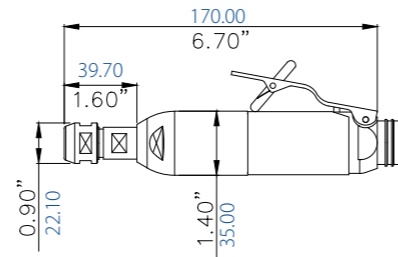


Ordering Information

For more information and / or to place an order, please contact ATA Customer Service Internationally +353 (0) 49 432 6178 or by email sales@atagroup.ie or the UK +44 (0) 844 967 0702, email sales@atagroupuk.com

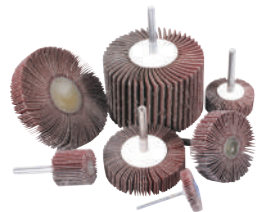


SANDER Low Speed Polisher - SBxLR Line



| Model | SB10LR-IMP | SB5LR-IMP |
|--------------------------|--------------|--------------|
| Speed (rpm) | 9000 | 5000 |
| Power (hp) | 0.40 | 0.40 |
| Power (Watt) | 300 | 300 |
| Weight (Kg) | 0.60 | 0.60 |
| Weight (lb) | 1.32 | 1.32 |
| Air consumption (m3/min) | 0.57 | 0.57 |
| Air consumption (cfm) | 20.13 | 20.13 |
| Noise level (db(A)) | 68 | 68 |
| Standard collet (mm) | 6 | 6 |
| Collet options (mm) | 3,8,10 | 3,8,10 |
| Standard collet (") | 1/4" | 1/4" |
| Collet options (") | 1/8", 3/8" | 1/8", 3/8" |
| Exhaust type | Rear | Rear |
| Lever type | Safety lever | Safety lever |

| Recommended Consumables | |
|-------------------------|---|
| Carbide Burs | 12 & 15mm - 1/2" & 9/16" |
| Abrasives | Fan grinders, QCD, Mounted points, Surface conditioning and sanding discs |



| Accessories | Part Number |
|-------------|-------------|
| Spanner | 25561110 |
| Spanner | 25561210 |
| Hose | 17712120 |
| Over hose | 17794520 |
| Hose Set | 17711420 |

FEATURES & BENEFITS

- Low speed/high torque due to planetary gears, ideal for titanium applications
- Collet options to accommodate range of shank mounted consumables
- Excellent power/weight ratio
- Ergo sleeve fitted for operator comfort

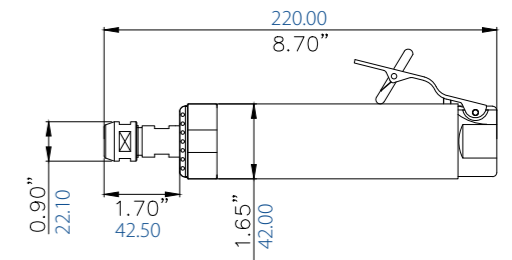


Ordering Information

For more information and / or to place an order, please contact ATA Customer Service Internationally +353 (0) 49 432 6178 or by email sales@atagroup.ie or the UK +44 (0) 844 967 0702, email sales@atagroupuk.com



SANDER Low Speed Polisher - S5L-IMP



| Model | S5L-IMP |
|---------------------------------|--------------|
| Speed (rpm) | 5000 |
| Power (hp) | 0.85 |
| Power (Watt) | 630 |
| Weight (Kg) | 1.30 |
| Weight (lb) | 2.86 |
| Air consumption (m3/min) | 0.85 |
| Air consumption (cfm) | 30.01 |
| Noise level (db.(A)) | 66 |
| Standard Collet Size Metric | 6 |
| Collet Options - Metric | 3,8,10 |
| Standard Collet Size - Imperial | 1/4" |
| Collet Options - Imperial | 1/8", 3/8" |
| Exhaust type | Front |
| Lever type | Safety lever |

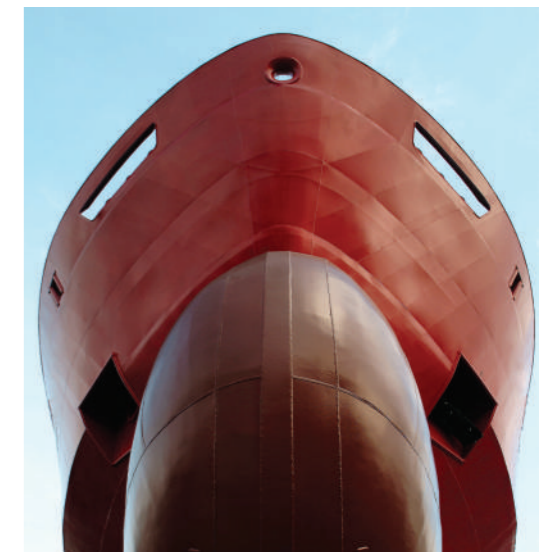
| Recommended Consumables | |
|-------------------------|---|
| Carbide Burs | |
| Abrasives | Fan grinders, QCD, Mounted points, Surface conditioning and sanding discs |



| Accessories | Part Number |
|-------------|-------------|
| Spanner | 25561110 |
| Spanner | 25561210 |
| Hose | 17731420 |
| Over hose | 17794520 |
| Hose Set | 17711020 |

FEATURES & BENEFITS

- Low speed/high torque due to planetary gears
- Suitable for a wide range of sanding applications
- Collet options to accommodate range of shank mounted consumables
- Double handed operation for improved control
- Ergo sleeve fitted for operator comfort

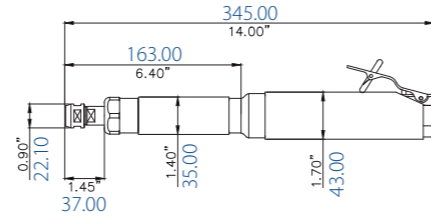


Ordering Information

For more information and / or to place an order, please contact ATA Customer Service Internationally +353 (0) 49 432 6178 or by email sales@atagroup.ie or the UK +44 (0) 844 967 0702, email sales@atagroupuk.com



SANDER Low Speed Polisher - STXxL



| Model | STX5L-IMP | STX3L-IMP |
|--------------------------|--------------|--------------|
| Speed (rpm) | 5000 | 3000 |
| Power (hp) | 0.85 | 0.85 |
| Power (Watt) | 630 | 630 |
| Weight (Kg) | 1.60 | 1.60 |
| Weight (lb) | 3.52 | 3.52 |
| Air consumption (m3/min) | 0.85 | 0.85 |
| Air consumption (cfm) | 30.01 | 30.01 |
| Noise level (db.(A)) | 66 | 64 |
| Standard collet (mm) | 6 | 6 |
| Collet options (mm) | 3,8,10 | 3,8,10 |
| Standard collet (") | 1/4" | 1/4" |
| Collet options (") | 1/8", 3/8" | 1/8", 3/8" |
| Exhaust type | Front | Front |
| Lever type | Safety lever | Safety lever |

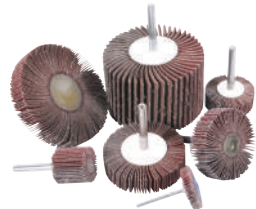
FEATURES & BENEFITS

- Low speed/high torque due to planetary gears
- Suitable for a wide range of sanding applications
- Collet options to accommodate range of shank mounted consumables
- Double handed operation for improved control
- Ergo sleeve fitted for operator comfort



| Recommended Consumables |
|-------------------------|
| Carbide Burs |

Abrasives Fan grinders, QCD, Mounted points, Surface conditioning and sanding discs



| Accessories | Part Number |
|-------------|-------------|
| Spanner | 25561110 |
| Spanner | 25561210 |
| Hose | 17731420 |
| Over hose | 17794520 |
| Hose Set | 17711020 |



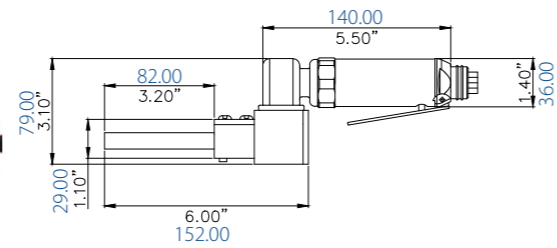
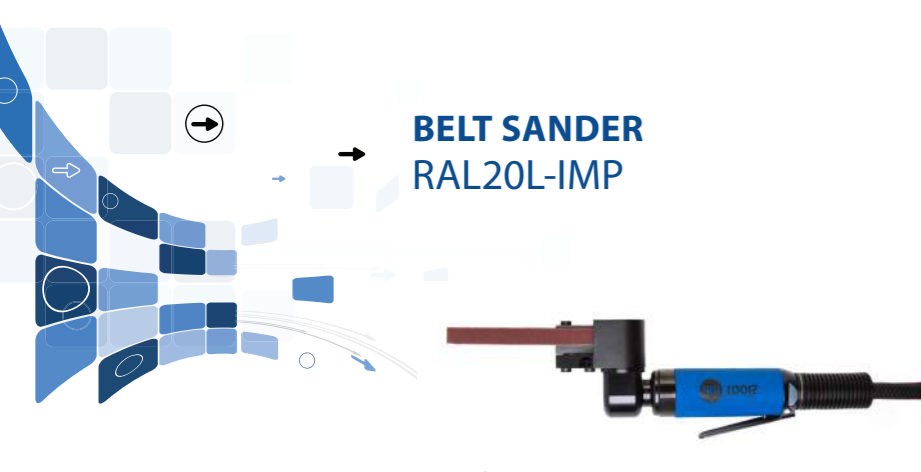
Ordering Information

For more information and / or to place an order, please contact
 ATA Customer Service Internationally +353 (0) 49 432 6178 or
 by email sales@atagroup.ie or the UK +44 (0) 844 967 0702,
 email sales@atagroupuk.com



BELT SANDERS





| | |
|--------------------------|--------------|
| Model | RAL20L-IMP |
| Speed (rpm) | 20000 |
| Power (hp) | 0.40 |
| Power (Watt) | 300 |
| Weight (Kg) | 0.85 |
| Weight (lb) | 1.87 |
| Air consumption (m3/min) | 0.57 |
| Air consumption (cfm) | 20.13 |
| Noise level (db.(A)) | 74 |
| Exhaust type | Rear |
| Lever type | Safety lever |

| | |
|-------------------------|--|
| Recommended Consumables | |
| Abrasives | Abrasives and surface conditioning belts |

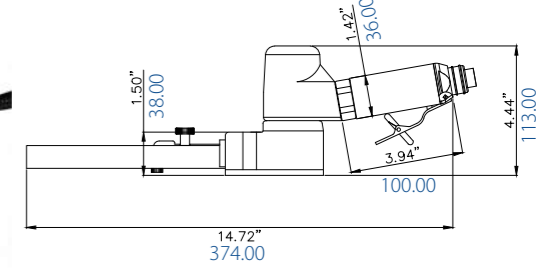
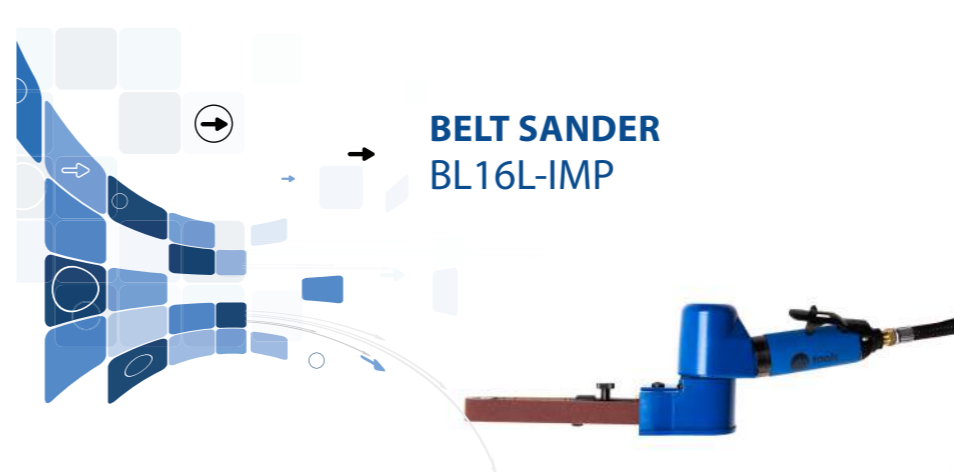


| Accessories | Part Number |
|-------------|-------------|
| Allen Key | 10900100 |
| Allen Key | 10903100 |
| Hose | 17731420 |
| Over hose | 17794520 |
| Hose Set | 17711020 |

Please refer to accessories page 36 for contact wheels arms and platen



Ordering Information
 For more information and / or to place an order, please contact ATA Customer Service Internationally +353 (0) 49 432 6178 or by email sales@atagroup.ie or the UK +44 (0) 844 967 0702, email sales@atagroupuk.com



| | |
|--------------------------|--------------|
| Model | BL16L-IMP |
| Speed (rpm) | 16000 |
| Power (hp) | 0.50 |
| Power (Watt) | 370 |
| Weight (Kg) | 1.30 |
| Weight (lb) | 2.86 |
| Air consumption (m3/min) | 0.60 |
| Air consumption (cfm) | 21.19 |
| Noise level (db.(A)) | 73 |
| Exhaust type | Front |
| Lever type | Safety lever |

| | |
|-------------------------|--|
| Recommended Consumables | |
| Abrasives | Abrasives and surface conditioning belts |



| Accessories | Part Number |
|-------------|-------------|
| Allen key | 10911800 |
| Allen key | 10903100 |
| Hose | 17731420 |
| Over hose | 17794520 |
| Hose set | 17711020 |

Please refer to accessories page 36 for contact wheels arms and platen



Ordering Information
 For more information and / or to place an order, please contact ATA Customer Service Internationally +353 (0) 49 432 6178 or by email sales@atagroup.ie or the UK +44 (0) 844 967 0702, email sales@atagroupuk.com

ACCESSORIES RA14



Type S Part No. 14079220



Type A Part No. 14075610

| Type | Description | Part number | Picture |
|------|--|-------------|------------|
| S | Solid handle rugged design | 140-756-20 | 140-756-20 |
| A | Rugged all rubber handle. Comfortable ergonomic design with rubber isolation buffer for reduced vibration. | 140-792-10 | 140-792-10 |

Spindle options for disc grinders

| | | |
|---|---|---|
| <p>TYPE 1-22 TYPE 1-16 Standard threaded flange with safety screw. TYPE 1-22 for wheels with 22mm (7/8") center hole. TYPE 1-16 for wheels with 16mm (5/8") center hole. Note: Type 1-22 can be converted to Type 3-5/8 by removing flanges and adding spacer part code 233-105-10</p> | <p>TYPE 4 Dynamic autobalance system counteracts wheel imbalance. Low vibration levels increase wheel life and reduce operator fatigue. Quick fit locking flange for easy wheel change - use only common hex wrench. Available only for wheels with 22mm (7/8") center hole.</p> | <p>TYPE 5 Dynamic autobalance system counteracts wheel imbalance. Low vibration levels increase wheel life and reduce operator fatigue. Threaded Spindle for threaded center hubbed wheels or other thread on consumables such as wire brushes. Available only with 5/8-11 thread.</p> |
|---|---|---|

Exhaust options
P - Piston type exhaust
D - Diffuser type exhaust

ACCESSORIES



Ordering Information

For more information and / or to place an order, please contact ATA Customer Service Internationally +353 (0) 49 432 6178 or by email sales@atagroup.ie or the UK +44 (0) 844 967 0702, email sales@atagroupuk.com

ACCESSORIES Belt Sanders

Standard Contact Wheel Arm for RAL20L

| Material | Diameter | Diameter | Belt dimensions | Belt dimensions | Part number |
|--------------|----------|----------|-----------------|-----------------|-------------|
| Rubber wheel | 16mm | 5/8" | 305mm x 12mm | 12" x 1/2" | 515-133-20 |

Optional Contact Wheel Arms for RAL20L

| Material | Diameter | Diameter | Belt dimensions | Belt dimensions | Part number |
|--------------|----------|----------|-----------------|-----------------|-------------|
| Rubber wheel | 16mm | 5/8" | 457mm x 12mm | 18"-19" x 1/2" | 515-134-20 |
| Steel wheel | 8mm | 5/16" | 457mm x 12mm | 18" x 1/2" | 515-136-20 |
| Steel wheel | 8mm | 5/16" | 305mm x 12mm | 12" x 1/2" | 515-135-20 |
| Steel wheel | 8mm | 5/16" | 305mm x 6mm | 12" x 1/4" | 515-137-20 |
| Steel wheel | 8mm | 5/16" | 457mm x 6mm | 18" x 1/4" | 515-138-20 |
| Rubber wheel | 16mm | 5/8" | 330mm x 12mm | 13" x 1/2" | 515-100-20 |
| Rubber wheel | 8mm | 5/16" | 305mm x 12mm | 12" x 1/2" | 515-071-20 |

All arms are supplied with soft platen fitted

Standard Contact Wheel Arm for BL16L

| Material | Diameter | Diameter | Belt dimensions | Belt dimensions | Part number |
|---------------|----------|----------|-----------------|-----------------|-------------|
| Rubber wheel* | 25mm | 1" | 480mm x 20mm | 18"-19" x 3/4" | 516-015-20 |

Optional Contact Wheel Arms for BL16L

| Material | Diameter | Diameter | Belt dimensions | Belt dimensions | Part number |
|----------------|----------|----------|-----------------|-----------------|-------------|
| Rubber wheel* | 25mm | 1" | 480mm x 25mm | 18"-19" x 1" | 516-029-20 |
| Rubber wheel* | 25mm | 1" | 457mm x 20mm | 18" x 3/4" | 516-027-20 |
| Rubber wheel* | 14mm | 9/16" | 480mm x 20mm | 18"-19" x 3/4" | 516-028-20 |
| Rubber wheel* | 25mm | 1" | 480mm x 12mm | 18"-19" x 1/2" | 516-026-20 |
| Rubber wheel** | 16mm | 5/8" | 480mm x 12mm | 18"-19" x 1/2" | 516-024-20 |
| Rubber wheel** | 8mm | 5/16" | 610mm x 12mm | 24" x 1/2" | 516-025-20 |
| Rubber wheel | 8mm | 5/16" | 305mm x 12mm | 12" x 1/2" | 515-071-20 |

* Please order platen separately - part number : 516-022-20

** Arms supplied with platen fitted



Ordering Information

For more information and / or to place an order, please contact ATA Customer Service Internationally +353 (0) 49 432 6178 or by email sales@atagroup.ie or the UK +44 (0) 844 967 0702, email sales@atagroupuk.com

ACCESSORIES



Collets

| | 133-121-10 | 133-122-10 | 133-101-10 | 133-115-10 |
|--------|-------------|-------------|-------------|-------------|
| Type | CA | CB | CC | CD |
| Size | Part number | Part number | Part number | Part number |
| 3/32" | N/A | N/A | 133-103-10 | 133-113-10 |
| 1/8" | 133-123-10 | 133-126-10 | 133-102-10 | 133-112-10 |
| 1/4" | 133-107-10 | 133-116-10 | N/A | N/A |
| 3/8" | 133-125-10 | N/A | N/A | N/A |
| 2.34mm | N/A | N/A | 133-103-10 | 133-113-10 |
| 3.0mm | 133-123-10 | 133-126-10 | 133-101-10 | 133-115-10 |
| 6.0mm | 133-121-10 | 133-122-10 | N/A | N/A |
| 8.0mm | 133-124-10 | N/A | N/A | N/A |
| 10.mm | 133-106-10 | N/A | N/A | N/A |

Special size collets are available upon request. Please contact your customer service representative.

Hoses

| Tool Inlet Thread | Hose assemble thread details | Inlet hose | Inlet hose dimensions | Over hose | Over hose dimensions | Hose set | Hose dip | Tool example |
|-------------------|------------------------------|------------|-----------------------|------------|----------------------|------------|------------|--------------------------------|
| M8 Female | M8 Male x 1/4" Male | 177-010-20 | 2 metres x Ø6mm | 177-106-20 | 1 metre x Ø16mm | 177-012-20 | 277-102-10 | SP75R-IMP |
| 1/4" Female | 1/4" Male x 1/4" male | 177-314-20 | 3 metres x Ø8mm | 177-945-20 | 1 metre x Ø22mm | 177-114-20 | 277-104-10 | SD37LR-IMP |
| 1/2" Female | 1/4" Male x 3/8" Male | 177-338-20 | 3 metres x Ø12mm | 177-005-20 | 1 metre x Ø50mm | N/A | 166-110-00 | RA14-125PA4-IMP SHG18LR-IMP |
| 3/4" Female | 3/4" Female x 3/4" Female | 177-312-20 | 3 metres x Ø16mm | N/A | N/A | N/A | N/A | RA6AVH-IMP |
| 1/4" Female | 1/4" Male x 1/4" male | 177-121-20 | 2 metres x Ø8mm | 177-950-20 | 1 metre x Ø34mm | 177-053-20 | N/A | SMD25LR-CA-IMP |





Levers

| Type | Associated tools | Part number |
|--------------|---|-------------|
| Toggle lever | Fits all models except models covered by part 140-651-20 | 140-650-20 |
| Slide lever | Fits all models except RA14,RA10/20, RAB4LR, SB5LR and SD range | 140-719-20 |
| Toggle lever | Fits all SM, SMD and SMX models | 140-651-20 |

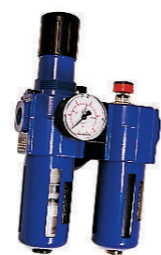
Swivel Connector

ATA Swivel connectors are available for all tools with 1/4" inlet thread. The swivel connector makes it easier to work in awkward areas and helps to reduce operator strain. Connectors have a 25 degree bending angle and 360 degree swivel with no pressure loss. They have a very smooth operation and are trouble free. 1/4 Female x 1/4 Male Swivel Connector. Part No: 166-860-00

Vitalizer Unit

The ATA vitalizer units remove moisture and harmful solids from the air stream and create an airborne 'micro fog' of oil which lubricates your ATA air motor, maintaining performance and ensuring long service life.

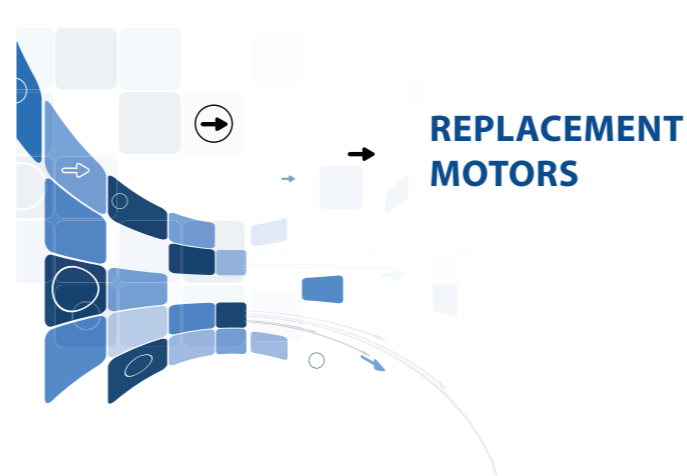
| Part number | Type | Connection Thread | SCFM | CU.M/min |
|-------------|---|-------------------|------|----------|
| AFLRG-1/4 | Automatic drain filter with micro fog lubricator and mounting bracket | 1/4" | 40 | 1.2 |
| AFLRG-1/2 | Automatic drain filter with regulator, gauge, micro fog lubricator and mounting bracket | 1/2" | 120 | 3.4 |



Lubrication Oil

Gear Lubrication Part number: GEARLUBE
All ATA right angle grinders and sanders are fitted with high quality gears. In order to maximise the service life of the gears it is necessary to ensure that they are properly lubricated. ATA tools utilize a unique wick system which releases the oil onto the gears when the tool is running and re-absorbs the oil when the tool is stopped. Where tools are in constant use the oil should be replenished daily through the oil screw fitted in the angle head of the tool. ATA recommends the use of ATA Gear lube or any high quality 68 cSt gear oil. Failure to lubricate gears will void all warranties.

Motor Lubrication Part number: ATALUBE
ATA recommends the use of ATALUBE air motor oil or other high quality 10cSt oil all vane type motors when using ATA Micro-Fog Lubricators. The oil drip rate can be set as shown in the table, remember that only 10% of the drip is actually delivered to the air supply, the remainder is returned to the main oil reservoir. Failure to properly lubricate a vane motor will void all warranties. Note: With Turbine motors such as model ST 100, lubrication oil should NOT be used.



ATA offers a replacement motor facility on various models shown below in the table and with the symbol by the tool throughout the catalogue.

- This allows downtime to be kept to a minimum.
- Replacement motors can be easily installed with proper training and equipment provide by ATA.
- After repair with a replacement motor, the customer has the equivalent of a new tool for a fraction of the cost.
- These motors come with the same guarantee as new tools. The original motor can again be repaired, (Using ATA replacement vanes bearings etc.) in the repair departments own time, or by ATA. The motor can then be ready for the next tool service.
- The use of replacement motors prevents the customer having to carry stock of extra tools to cover for tool breakdown.

| Four steps to replace the motor | |
|---------------------------------|--------------|
| 1 Loosen | micro step 1 |
| 2 Disassemble | micro step 2 |
| 3 Replace motor | micro step 3 |
| 4 Tighten | micro step 4 |

STRIPPING KITS

Regular maintenance is a critically important factor when assessing on going efficiency and safety in use. With this regard ATA have a policy of low cost spare parts to enable routine, preventative maintenance to be carried out.

In addition to our in-house repair facility, we offer explosion diagrams for spare parts, stripping instructions and stripping kits are available for all tools. All tools conform with EC machinery directive and its amendments and CE marking directive 2006/42/EC



Ordering Information

For more information and / or to place an order, please contact ATA Customer Service Internationally +353 (0) 49 432 6178 or by email sales@atagroup.ie or the UK +44 (0) 844 967 0702, email sales@atagroupuk.com

MAINTENANCE

Regular maintenance is a crucial factor when assessing ongoing efficiency and safety of tool use. ATA's policy of pricing quality spare parts economically enables routine preventative maintenance to be carried out cost-effectively. This contributes to reduced risk of vibration related injuries and can extend the life of both tool and consumable.

At ATA we offer to assist customers' vibration management systems. A tool survey is undertaken to start the programme to assist customers' risk assessments. Vibration levels are sustained at benchmark levels throughout the tools life. Service, repair and quality checks are all part of the service offered. Tools register maintained for customers.

Stage One

ATA personnel create a tool register where the tools are etched with an identifier. Initial tools for recall are agreed along with the frequency. A recall notice is issued to the appointed customer representative who arranges their prompt return.

Stage Two

The tools are booked into the workshop and a job card created. Tools are inspected and serviced, any remedial work is identified and communicated by written quote, the tools are bench tested for run-out, vibration levels and speed. Information is captured both on a delivery note and on the tool record card. Tools are then returned to the customer. Our service gives customers a guarantee that tools are being maintained to the highest standard, with original parts being used throughout.

This programme provides the following benefits:

- Air tools inventory control
- Preventive and proactive maintenance
- Stable maintenance costs
- Efficiency gain thanks to correct pairing of air tool and consumable
- Delivery and collection service
- Technical support to allow continuous process optimization



Managing Vibration

Hand Arm Vibration Syndrome (HAVS) and work related upper limb disorder (WRULD) are collective terms covering a number of potential serious injuries associated with extensive use of percussion and rotary tools, of which vibration white finger (VWF) is the most commonly recognised. It has been widely acknowledged that vibration generated from hand held power tools is the major contributory factor in such ailments and unless managed in line with current EU legislation and standards the loss of potential downtime from potential injury cannot be guaranteed.

All of our products and services have been designed and implemented recognising the related vibration risk. ATA strive to deliver the customer maximum productivity whilst ensuring minimum impact to operators health.

Continuous improvements to assist vibration and noise management such as ergo sleeves, auto-balancers, anti-vibration handles and rear exhausts have been designed to optimise efficiency in order to reduce finger on trigger time (FOTT). We aim to ensure consumables are matched to grinders for optimum performance and both are manufactured to comply with all CE regulations. Our close relationship to our sister companies producing burs and other abrasive consumables provides competitive advantage in our unparalleled product knowledge in the best tool to consumable combination offering the lowest possible vibration and highest possible productivity.



Ordering Information

For more information and / or to place an order, please contact
ATA Customer Service Internationally +353 (0) 49 432 6178 or
by email sales@atagroup.ie or the UK +44 (0) 844 967 0702,
email sales@atagroupuk.com

NOTES



A series of horizontal lines for writing, spanning the width of the page below the decorative header.



A series of horizontal lines for writing, spanning the width of the page below the decorative header.



t: +1 330-928-7744
f: +1 330-849-2977

e: sales@atatools.com
w: www.atatools.com

ATA Tools Inc., 238 Marc Drive
Cuyahoga Falls, Ohio 44223

European Offices

t: +353 (0) 49 432 6178
f: +353 (0) 49 432 6298

e: sales@atagroup.ie
w: www.atagroup.ie

IDA Business & Technology Park,
Killygarry, Cavan, Co. Cavan, Ireland